

UNIVERSITY OF OREGON
OREGON BACH FESTIVAL

CPC Presentation
February 11, 2016

HACKER



LARGE SCALE CAMPUS

Campus Trees
Good Neighbor
Main Gateways
Open-Space Framework
Open University
Outdoor Classroom
Sustainable Development
Universal Access
Welcoming To All

TRANSPORTATION

Bike Paths, Racks, And Lockers
Local Transportation Area
Looped Local Roads
Paths And Goals
Pedestrian Pathways
Peripheral Parking
Shielded Parking And Service Areas
Spillover Parking
Road Crossings

SITE ARRANGEMENT

Activity Nodes
Building Complex
Connected Buildings
Existing Uses / Replacement
Family Of Entrances
Main Building Entrance
Positive Outdoor Space
Public Outdoor Room
Quiet Backs
Seat Spots
Site Repair
Sitting Wall
South Facing Outdoors
Tree Places
Use Wisely What We Have

BUILDING DESIGN

Four-Story Limit
Architectural Style
Operable Windows
Flexible and Longevity
Future Expansion
Wholeness of Project
Wings of Light
Quality of Light
Organizational Clarity
Building Hearth
Office Connections
Public Gradient
Fabric of Departments
No Signs Needed
Faculty-Student Mix
Places to Wait
Enough Storage
Building Character and Campus Context
Arcades
Pools of Light
Materials and Operations

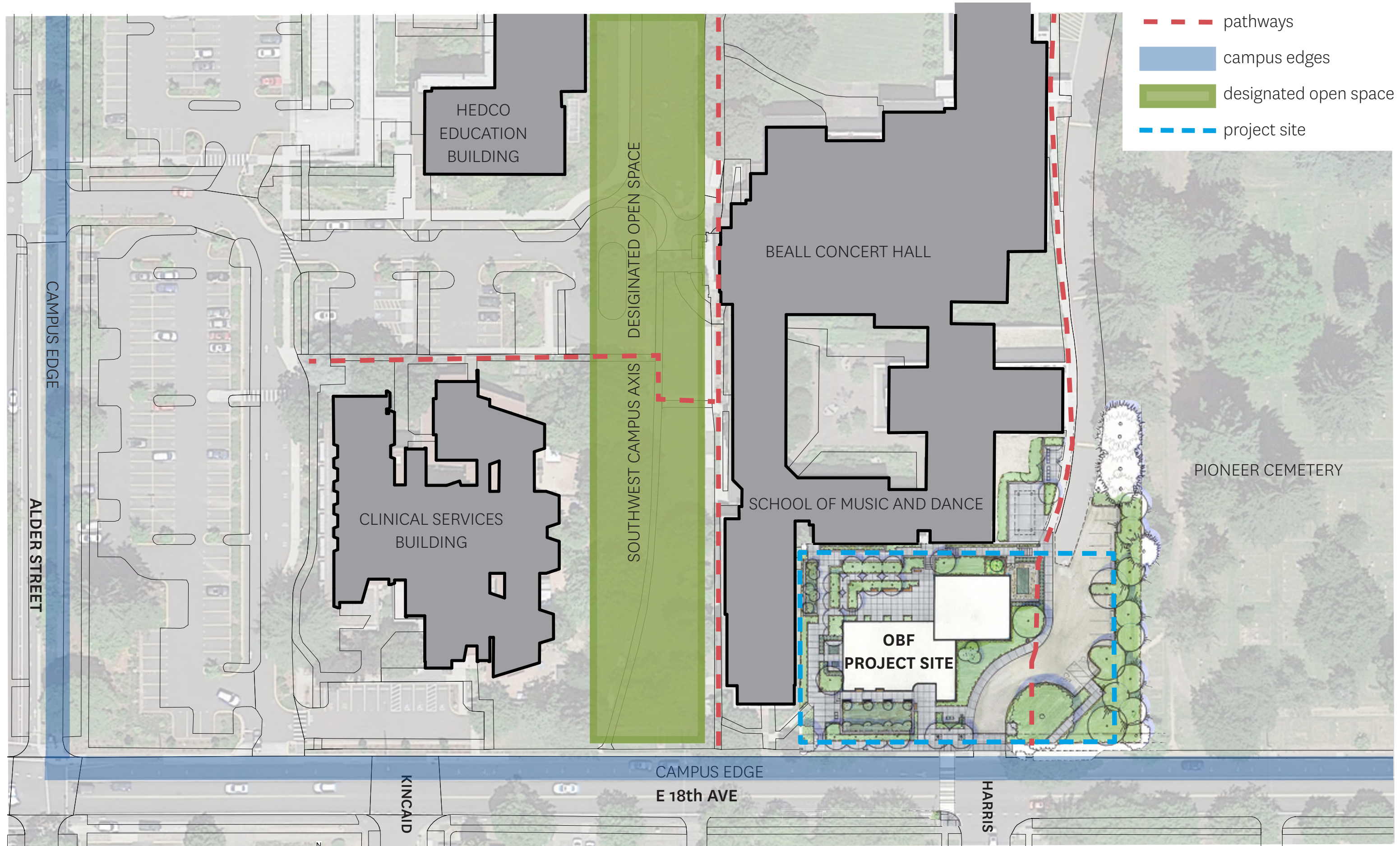
History and Identity

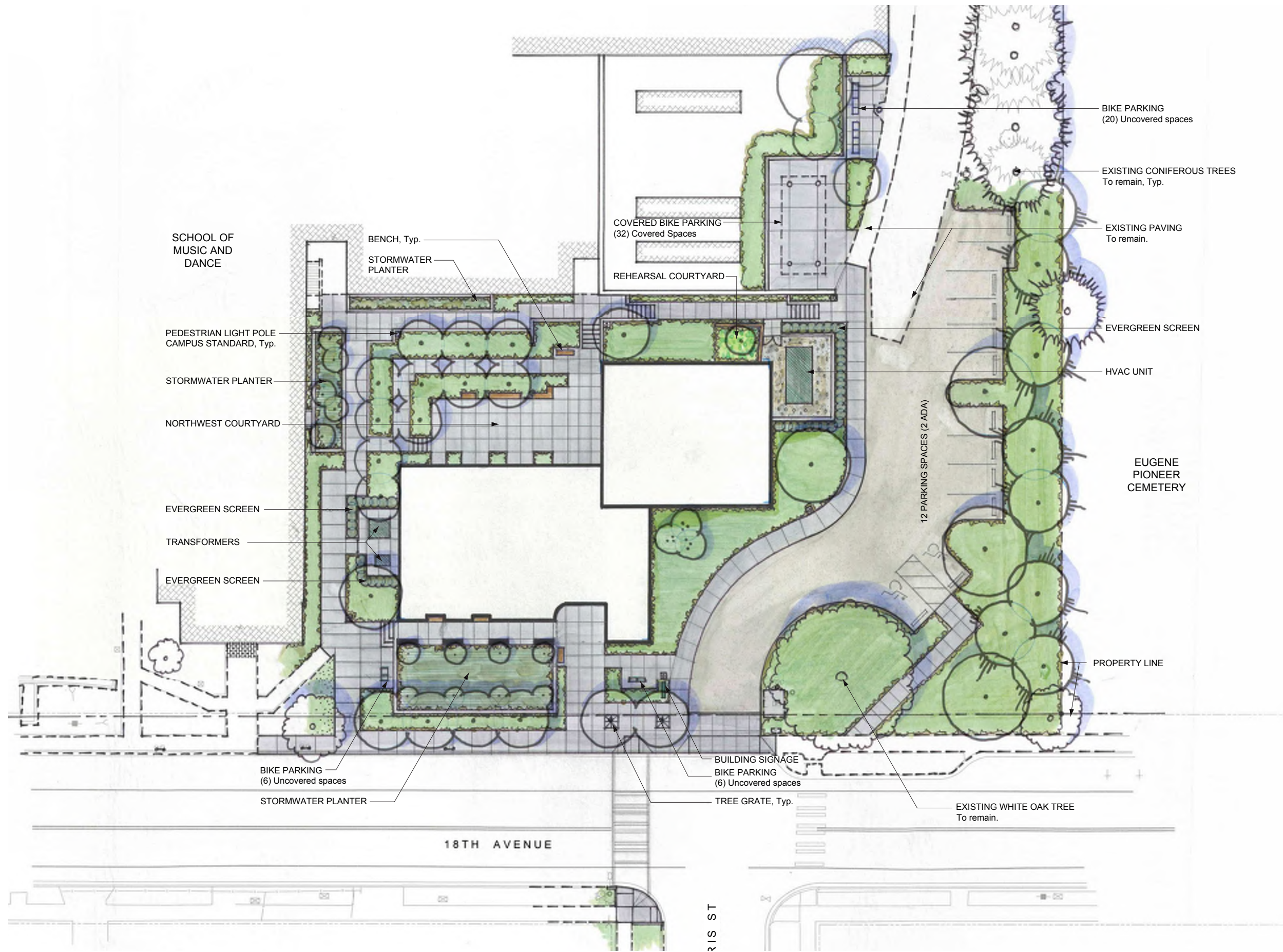
Gateway to Campus

A Front Door

Series of Outdoor Courtyards

A Building Within a Building Within a Complex





LEGEND

	PROPERTY LINE
	EXISTING TREES TO REMAIN
	PROPOSED DECIDUOUS TREES
	PROPOSED CONIFEROUS TREES
	TREE GRATE
	PEDESTRIAN LIGHT POLE
	RETAINING WALL
	BIKE PARKING
	BENCH
	CONCRETE WALK
	ASPHALT PAVING
	PLANT BED
	STORMWATER PLANTER

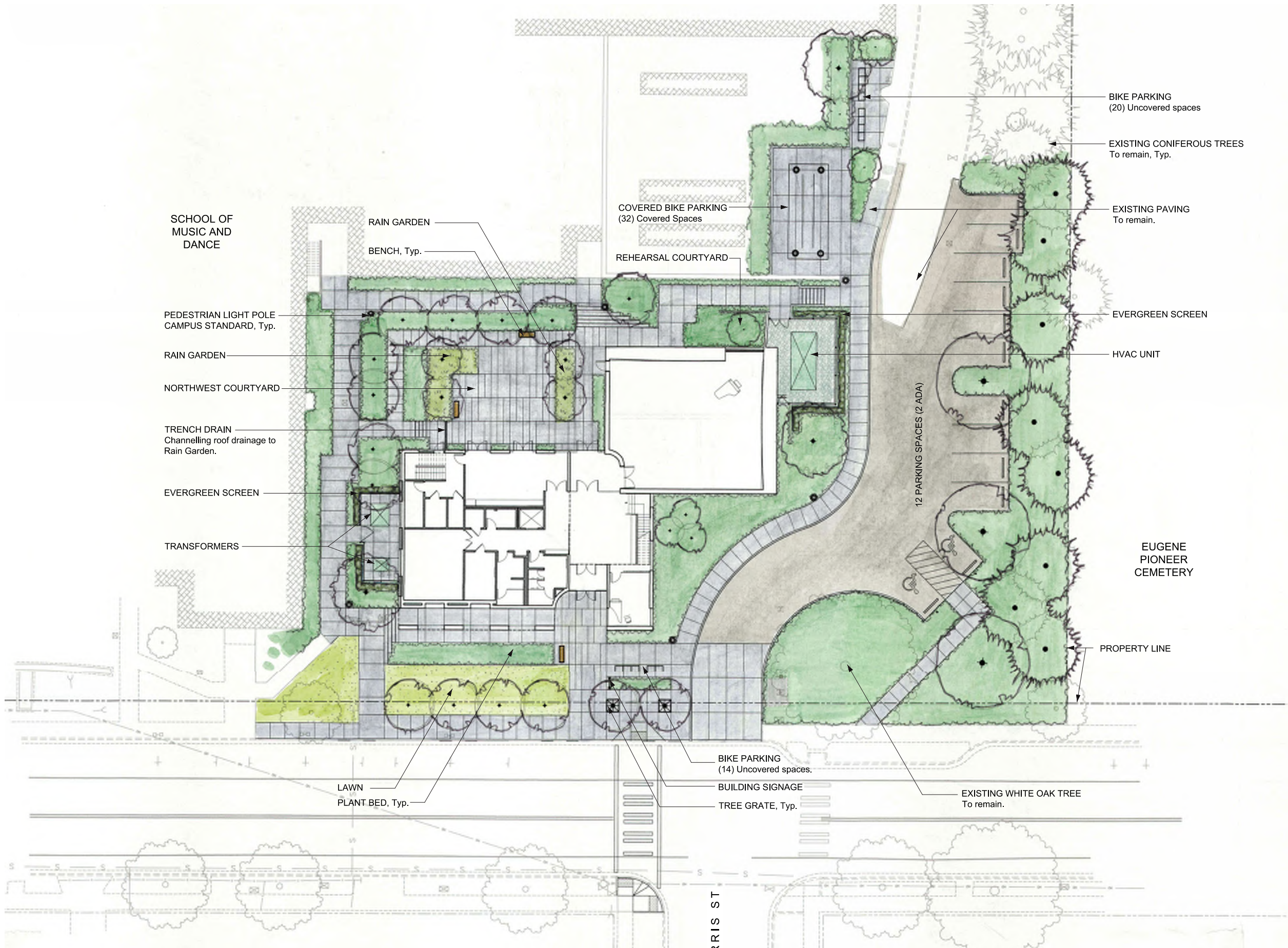
PREVIOUS CPC COMMENTS REGARDING SITE DESIGN:

Consider extending the concrete paving across the driveway to emphasize the pedestrian experience.

Consider simplifying the route from the east to the courtyard so that pedestrians are not going up and down stairs unnecessarily.

Attempt to maximize the effective size of the courtyard by reconsidering the position of the ramp. Take into consideration the need to move instruments through the courtyard.

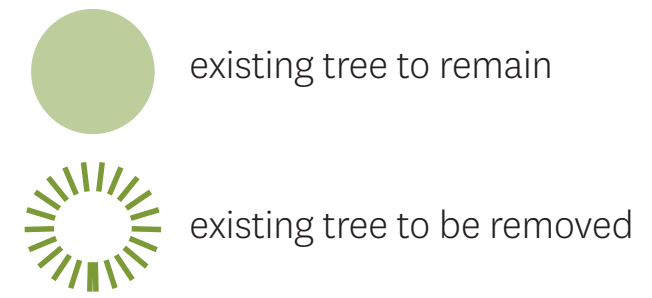
Pay close attention to the quality of the pedestrian experience on the north-south pathway through the site.



LEGEND

	PROPERTY LINE
	EXISTING TREES TO REMAIN
	PROPOSED DECIDUOUS TREES
	PROPOSED CONIFEROUS TREES
	TREE GRATE
	PEDESTRIAN LIGHT POLE
	RETAINING WALL
	BIKE PARKING
	BENCH
	CONCRETE WALK
	ASPHALT PAVING
	PLANT BED
	RAIN GARDEN
	LAWN

SCHOOL OF MUSIC AND DANCE



24"
AMERICAN
SWEETGUM

EVGR

CEDAR
CEDAR
CEDAR

48" JUNIPER

12"
FLOWERING
DOGWOOD

CEDAR

FLOWERING DOGWOOD

PLUMB SAWARA

WESTERN
HEMLOCK

42"
AMERICAN
SWEETGUM

WEeping HIGAN
CHERRY

28"
MAZZARD
CHERRY

16"
BLACK WALNUT

CRIMSON
KING NORWAY
MAPLE

PURPLELEAF
PLANETREE
MARLE

36"
EASTERN
WHITE OAK

FILBERT

18th AVE

Landscape

NATIVE TREES

Doug Fir



California Incense Cedar



Pacific Dogwood



TREES FOR STORMWATER PLATERS

Persian Parrotia



River Birch



Amelanchier



Katsura



TREES ON 18TH

Vine Maple



Rocky Mountain Maple



Columnar Tulip Tree



Stewartia



Seven Sons Tree



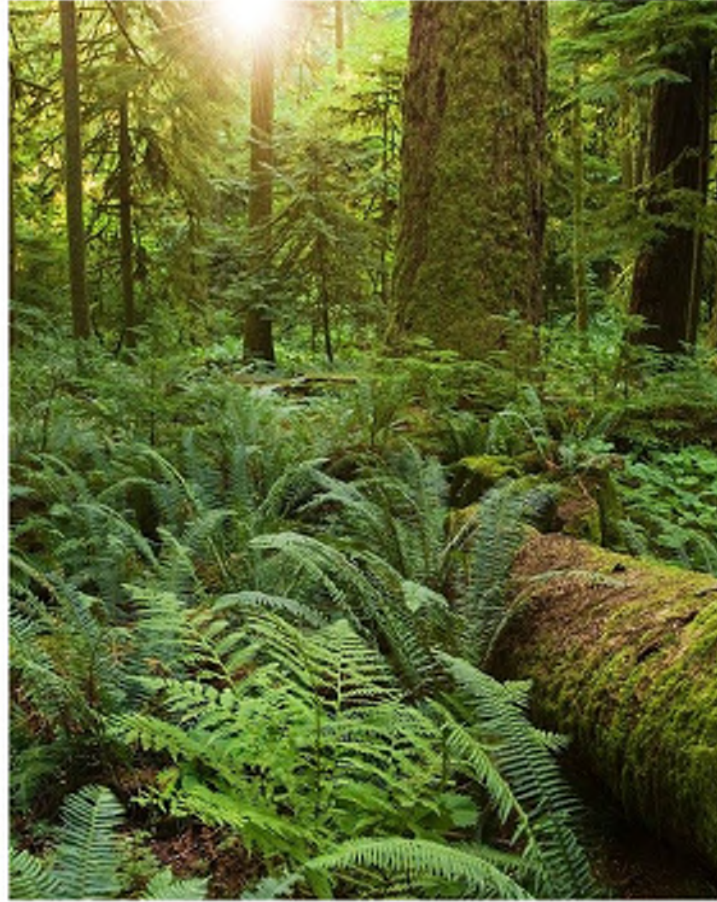
Pyramidal European Hornbeam



URBAN EDGE MASSINGS



CEMETERY PLANTING



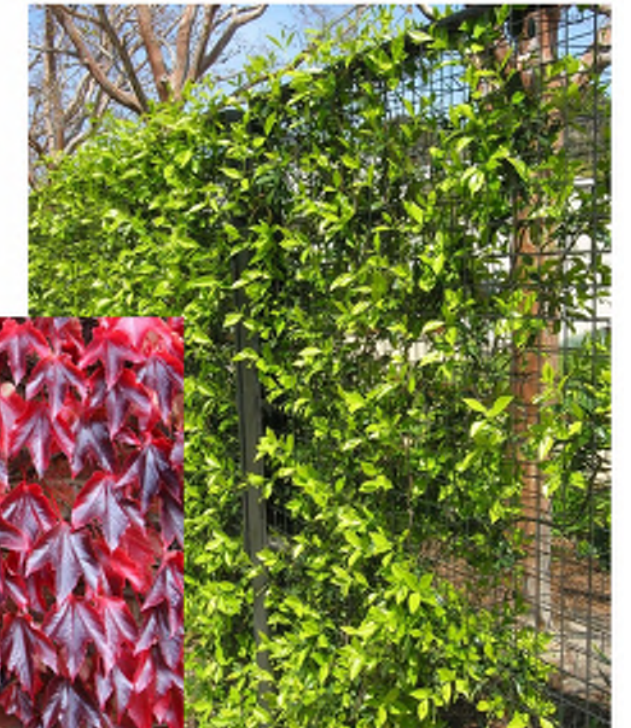
STORMWATER PLANTERS



CAMAS AT WHITE OAK TREE



NORTH GREENROOF WALL AND HVAC SCREENING



COURTYARD



REHEARSAL ROOM GARDEN



Malus tschonoskii
Upright Crabapple



Stewartia japonica
Japanese Stewartia



Cornus 'Eddie's White Wonder'
Eddie's White Wonder Dogwood



Styrax japonicus
Japanese Snowbell





















End









University of Oregon
Oregon Bach Festival

REHEARSAL ROOM

HACKER